

Datasheet

SARS-CoV-2 Nucleocapsid Protein Monoclonal Antibody (6A8)

Product Name	SARS-CoV-2 Nucleocapsid Protein Monoclonal Antibody (6A8)
Catalogue Number	BSV-COV-AB-15
Clone, Isotype	Monoclonal 6A8, IgG2b
Concentration	≥ 1µg/µl
Format	IgG
Tested Applications	WB, ELISA

Description:

SARS-CoV-2 Nucleocapsid Protein Monoclonal Antibody (6A8) from mouse

Product Details:

Source: Recombinant SARS-CoV-2 N protein (His-tag)

Host: Mouse

Clone: 6A8

Specificity: 2019-nCoV CoV Nucleocapsid

Clonality: Monoclonal

Isotype: IgG2b

Purification: Purified by Protein G

Concentration: ≥1 µg/µl

Conjugation: Unconjugated

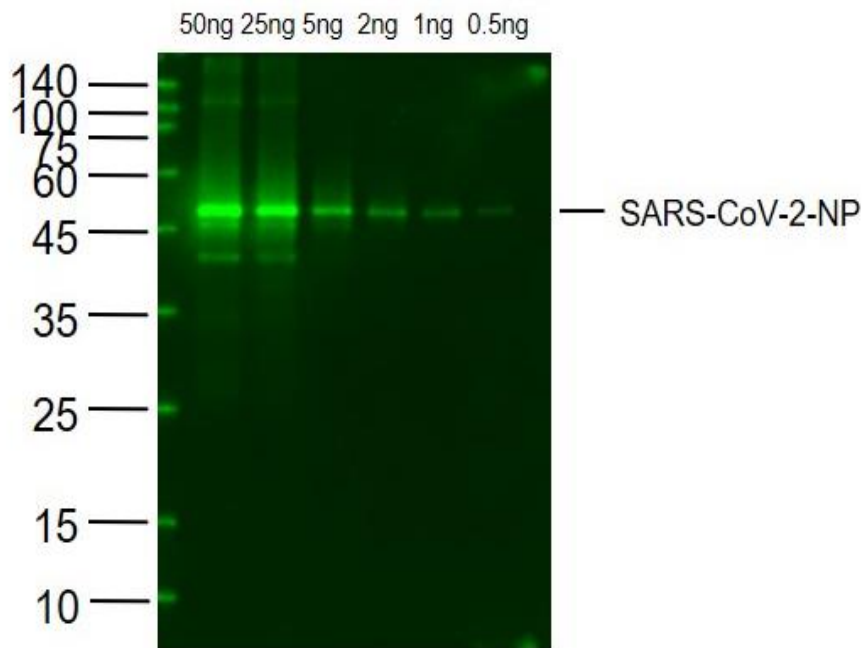
Shipping: This antibody is shipped at ambient temperature.

Storage: Aqueous buffered solution containing 0.01M PBS (pH7.4) with 0.1% Proclin300. Store at -20°C for 12 months.

Regulatory/ Restrictions: For Research Use Only.

Applications	Suggested Dilution
Western blot	1:300 – 1:1000
ELISA	1:500 – 1:1000

Applications



Western Blot

Lane 1: SARS-CoV-2 N protein at 50ng

Lane 2: SARS-CoV-2 N protein at 25ng

Lane 3: SARS-CoV-2 N protein at 5ng

Lane 4: SARS-CoV-2 N protein at 2ng

Lane 5: SARS-CoV-2 N protein at 1ng

Lane 6: SARS-CoV-2 N protein at 0.5ng

probed with SARS-CoV-2 N protein monoclonal Antibody, Unconjugated at 1:1000 dilution and 4°C overnight incubation. Followed by conjugated secondary antibody incubation at 1:20000 for 60 min at 37°C.