

## Datasheet

### SARS-CoV-2 Nucleocapsid Protein Monoclonal Antibody (7A7)

Product Name	SARS-CoV-2 Nucleocapsid Protein Monoclonal Antibody (7A7)
Catalogue Number	BSV-COV-AB-14
Clone, Isotype	Monoclonal 7A7, IgG2b
Concentration	≥1 µg/µl.
Format	IgG
Tested Applications	WB, ELISA

#### Description:

SARS-CoV-2 Nucleocapsid Protein Monoclonal Antibody (7A7) from mouse

#### Product Details:

**Source:** Recombinant SARS-CoV-2 N protein (His-tag)

**Host:** Mouse

**Clone:** 7A7

**Specificity:** 2019-nCoV CoV Nucleocapsid

**Clonality:** Monoclonal

**Isotype:** IgG2b

**Purification:** Purified by Protein G

**Concentration:** ≥1 µg/µl

**Conjugation:** Unconjugated

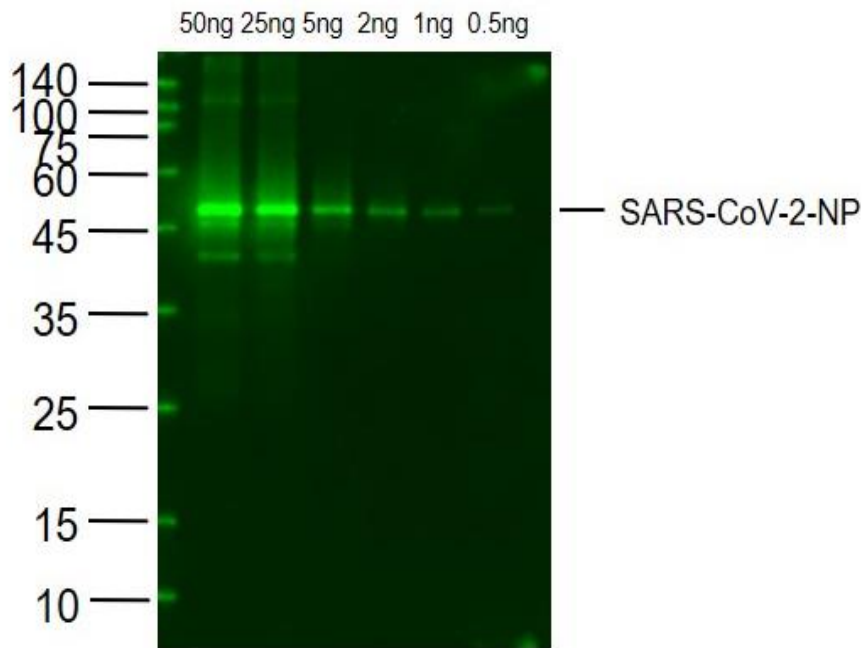
**Shipping:** This antibody is shipped at ambient temperature.

**Storage:** Aqueous buffered solution containing 0.01M PBS (pH7.4) with 0.1% Proclin300. Store at -20°C for 12 months.

**Regulatory/ Restrictions:** For Research Use Only.

Applications	Suggested Dilution
Western blot	1:300 – 1:1000
ELISA	1:500 – 1:1000

## Applications



### Western Blot

Lane 1: SARS-CoV-2 N protein at 50ng

Lane 2: SARS-CoV-2 N protein at 25ng

Lane 3: SARS-CoV-2 N protein at 5ng

Lane 4: SARS-CoV-2 N protein at 2ng

Lane 5: SARS-CoV-2 N protein at 1ng

Lane 6: SARS-CoV-2 N protein at 0.5ng

probed with SARS-CoV-2 N protein monoclonal Antibody, Unconjugated at 1:1000 dilution and 4°C overnight incubation. Followed by conjugated secondary antibody incubation at 1:20000 for 60 min at 37°C.